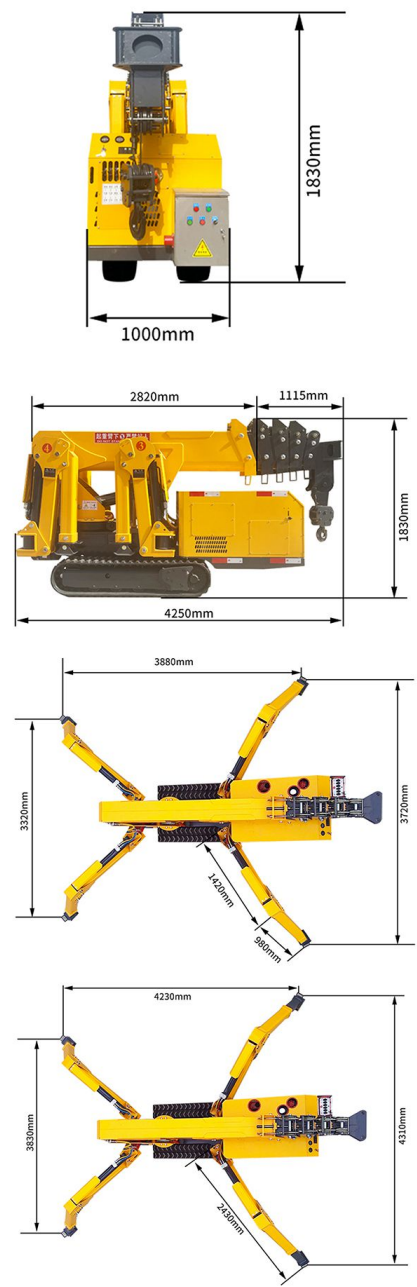
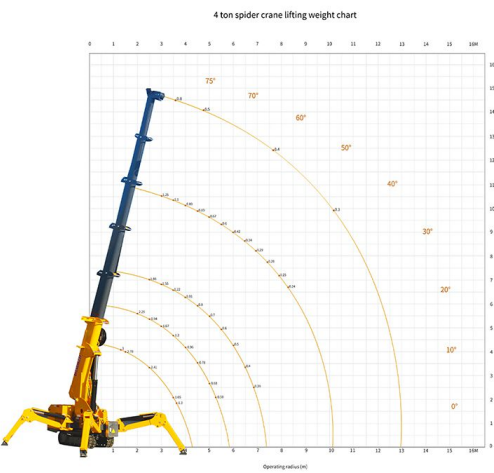
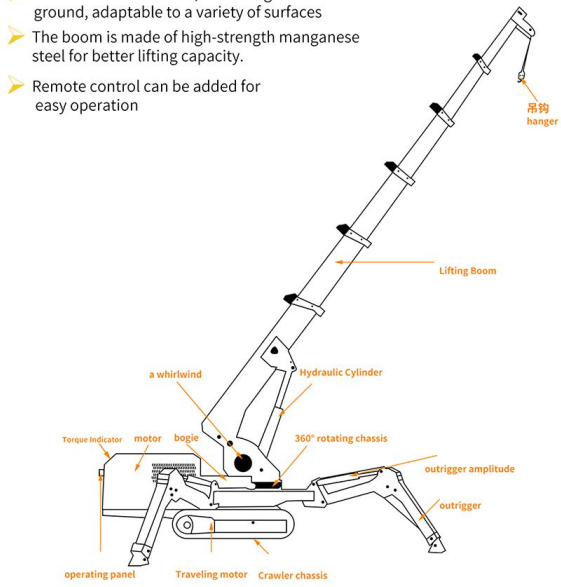


4Ton SPIDER CRANE

Performance Characteristics

- Small size, light weight, compact structure, widely used in small space such as floor roof lifting, substation maintenance, etc.
- Rubber tracked chassis, no damage to the ground, adaptable to a variety of surfaces
- The boom is made of high-strength manganese steel for better lifting capacity.
- Remote control can be added for easy operation



4Ton SPIDER CRANE

4T Spider Crane				
• dead-weight (T)		3T	• Electrical Machinery	• voltage AC380V
• Maximum operating radius		13m	• engine	• Manufacturer Changchai(Support customization)
• Maximum ground lift		15m		• model number Changchai 380G three-cylinder 14.7KW
• Winch device	• Hook lifting speed	0-8m/min (4 ropes)		• start mode Electric start
	• Specification of steel wire rope	Φ 8mm*45m		• start performance -50°C-45°C
• Telescopic device	• Boom form	3m X 6-section lifting arm (Support customization)		• Fuel/Volume Diesel oil/12L
	• Boom length/time	3.1m-15m/20sec (adjustable)		• Battery capacity 12v 45AH
• Luffing device	• Boom angle/time	0-78°/13sec	• Fuel consumption rate 274g/kW-h	
• gyroscope	• Rotation angle/speed	0-360 ° (continuous)/60sec	• noise level Rated speed ≤ 81.5dBA (1m)	
• Outrigger	• Outrigger movement form	Manual screw out + hydraulic support (three-section legs retractable)	• Operation type (boom/leg), manual walking Manual operation, manual travel (optional remote control)	
	• Maximum extension amplitude (mm)	4230 (length) X3830 (rear) X4310 (front)	• Operational Characteristics Manual operation(Optional remote control)	
• running gear	• Walking mode	hydraulic drive	• Standard configuration Diesel engine and electric motor (dual power)	
	• Walking speed	0-2.5km/h	• Vehicle Size 4.25meters length, 1meters width, and 1.83meters height	
	• Gradeability	25°(36%)	• Track (mm) 230 (width) 72 (pitch) 53 (section)	
• Optional	Optional torque controller/remote control/cradle/hydraulic flying jib/colors: red, green, yellow, white, grey, black			

### 4T spider crane lubrication parts diagram

The diagram shows the crane with red dots indicating lubrication points. Labels include 'greasing' (pointing to a grease gun), 'rotary (traffic)' (pointing to the rotating joint), and 'greasing' (pointing to the boom joint).

Note: Turntables and jibs must be maintained regularly (20 days as a cycle) Whenever the jibs are out, grease the jibs.

Lubrication point marking color	Lubrication cycle	Lubrication method	Lubricant Type
red (solar)	daily	Grease gun injection(application)	High-pressure sulfur-free heavy-duty grease
Green (engine oil)	100h	oil change	SI 15W-30 Motor Oil
Yellow (reducer)	100h	apply (makeup etc)	CKC220 Mineral Gear Oil

This product is strictly prohibited from being exposed to rain.

