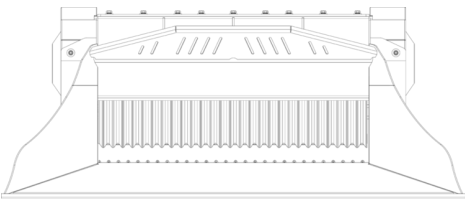
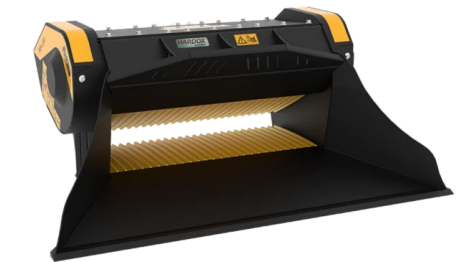
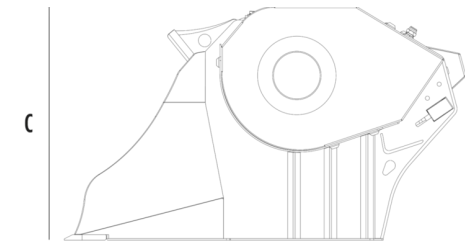


CRUSHER BUCKET

MB-L200 S2



A



B



SPECIFICATIONS

	Recommended excavator	ton	12 - 17
	Recommended backhoe loader	ton	7 - 12
	Recommended skid steer loader*	ton	6 - 8
	Weight	ton	1,5
	Load capacity	m³	0.43
	Pressure	bar	200 - 280
	Back pressure	bar	< 10
	Oil flow rate**	l/min	120 - 200
	Crusher mouth width	mm	1185
	Crusher mouth height	mm	280
	Size A	mm	2030
	Size B	mm	1435
	Size C	mm	835

\* Please verify machine's Rated Operating Capacity.  
\*\* The minimum hydraulic flow rate value must be alongside the required operating pressure.

OPTIONAL ACCESSORIES

Dust suppression kit	Hour meter
24 Month Warranty	

APPLICATION AREAS



Demolitions



Road works



Inert material recycling



Urban construction sites