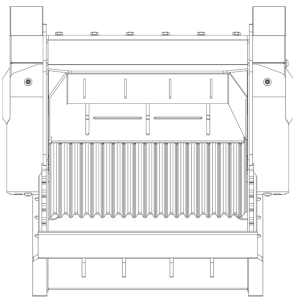
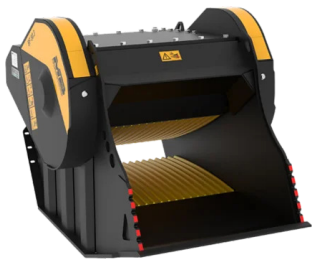
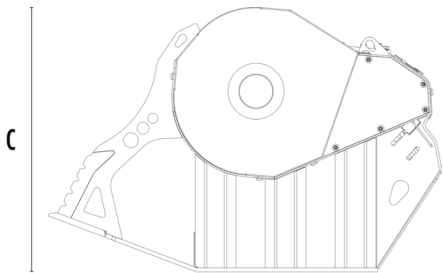


CRUSHER BUCKET

BF80.3 S4



A



B



SPECIFICATIONS



Recommended excavator	ton	18,5 - 29
Weight	ton	3
Load capacity	m³	0.7
Pressure	bar	220 - 280
Back pressure	bar	< 10
Oil flow rate*	l/min	150 - 220
Crusher mouth width	mm	880
Crusher mouth height	mm	510
Size A	mm	1330
Size B	mm	1970
Size C	mm	1325

* The minimum hydraulic flow rate value must be alongside the required operating pressure.

OPTIONAL ACCESSORIES

Dust suppression kit	Hour meter
24 V Iron Separator	24 Month Warranty

APPLICATION AREAS



Demolitions



Road works



Quarry



Mines



Tunnels



Enclosed spaces



Pipelines



Inert material
recycling



Urban construction
sites



Foundries



Forest maintenance