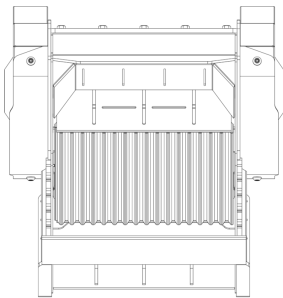
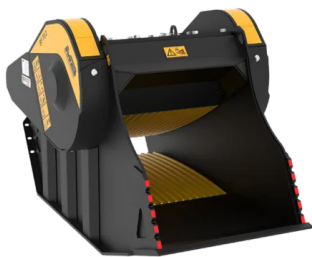
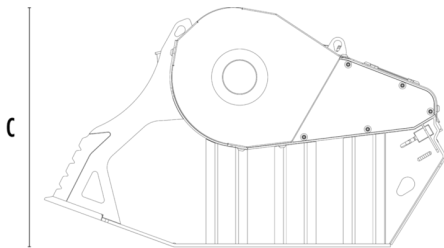


# CRUSHER BUCKET

# BF70.2 S4



A



B



## SPECIFICATIONS



Recommended excavator	ton	16 - 25
Weight	ton	2,3
Load capacity	m³	0.65
Pressure	bar	220 - 280
Back pressure	bar	< 10
Oil flow rate*	l/min	150 - 220
Crusher mouth width	mm	750
Crusher mouth height	mm	510
Size A	mm	1150
Size B	mm	2000
Size C	mm	1200

\* The minimum hydraulic flow rate value must be alongside the required operating pressure.

## OPTIONAL ACCESSORIES

Dust suppression kit	Hour meter
24 V Iron Separator	24 Month Warranty

## APPLICATION AREAS



Demolitions



Road works



Tunnels



Enclosed spaces



Pipelines



Inert material  
recycling



Urban construction  
sites



Foundries



Forest maintenance