



HZM

HZM 16G FRONT END LOADER

Proudly Distributed By **MCM**



Instagram:
[@mcm.company](https://www.instagram.com/mcm.company)



Facebook:
MCM Group



Website:
www.MCMGROUP.co.za



HZM

HZM 16G FRONT END LOADER

TECHNICAL SPECIFICATIONS

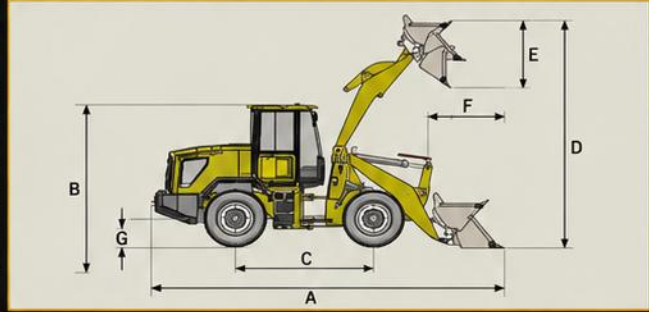


■ ENGINE	
Machine	16G
Model	Yunnei YN27GBZ
Net Peak Power	58kW / 78.8hp @ 2400rpm
Type	Direct Injection, Water Cooled
No. Of Cylinders	Diesel 4-cylinder Engine
Fuel Tank Capacity	85 Litres

■ TRANSMISSION SYSTEM	
Type	Hydraulic Transmission Box
Gears Forward / Reverse	2 Forward / 2 Reverse
Travel Speed	20-30 Km/h
Max. Torque	Nm
Transfer Case	4WD
Brake Control	Single Line, Air Brake

■ OPERATION DIMENSIONS		
A Total Travel Length	mm	5325
B Total Travel Height	mm	2750
Total Travel Width	mm	1950
C Wheel Track	mm	2180
Bucket Width	mm	1850
Wheel Base	mm	1485

■ OPERATION PARAMETERS		
Operating Weight	kg	4000
Max. Rated Load	kg	1600
Bucket Capacity	cbm	0.4
D Max. Dumping Height	mm	3200
E Max. Working Height	mm	3951
F Min. Dumping Distance	mm	992
Max. Dumping Angle	degrees	40-45
Max. Tractive Force	kgf	2273
Max. Breakout Force	kgf	2549
Hydraulic Flow Rate	L/min	90
System Pressure	MPa	16
Min. Turning Radius	mm	3358
G Min. Ground Clearance	mm	440



■ ATTACHMENTS				
Augers	Breakers	Brush Cutters	Buckets	Earth Drills
Forks	Grapples	Rippers	Shears	And More

*Under our policy of continuous improvement, we reserve the right to change technical data and design without prior notice.

CAPE TOWN
9 Karee Rd,
Kraaifontein Industria,
Cape Town, 7570

SALES (+27) 21 001 8686
ruan@mcmco.co.za

GEORGE
Jura Lands, Beach Road,
Hansmoeskraal,
George, 6529

SALES (+27) 44 878 2917
chris@mcmco.co.za

FREE STATE
Bloem Showgrounds,
Curie Avenue, Generaal De Wet,
Bloemfontein, 9301

SALES (+27) 84 022 7300
clarence@mcmco.co.za

GAUTENG
26 Sterling Rd, Unit 1,
Samrand Business Park,
Midrand, 0117

SALES (+27) 12 030 3451
sales@mcmco.co.za

Instagram:
@mcm.company

Facebook:
MCM Group

Website:
www.MCMGROUP.co.za