

AUSTTER
SOUTH AFRICA

AUSTTER D30MA SITE DUMPER

Compact. Tough. Built for Material Handling.



212cc / 7hp
Engine



300kg
Loading Capacity



Tracked
Compact Mobility



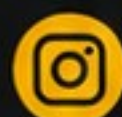
PROUDLY DISTRIBUTED BY

MCM

MCM



www.MCMGROUP.co.za



[mcm.company](https://www.instagram.com/mcm.company)



MCM GROUP

AUSTTER D30MA SITE DUMPER SPEC SHEET



TECHNICAL SPECIFICATIONS

01	Engine power	212cc; 7hp
02	Start	Recoil
03	Loading capacity	300 kg
04	Transmission	3F+1R
05	Steering	Yes
06	Tipping method	Manual and gas spring
07	Speed	0-3.6 km/h
08	Track width	180 mm
09	Bucket type	Welded
10	Weight (N.W./G.W.)	180 / 202 kg
11	Package Method	plywood case
12	Packing Size	1460 x 770 x 1130 mm
13	40HQ loading qty.	48 pcs

KEY FEATURES



212cc; 7hp
engine power



300kg
loading capacity



3F+1R
transmission



stop switch
emergency



The bucket is
integrated one piece



Track width is
up to 180mm



3 Forward + 1 Reverse

MCM



www.MCMGROUP.co.za

CAPE TOWN

9 Karee Rd,
Kraaifontein Industria,
Cape Town, 7570

SALES
(+27) 21 001 8686

ruan@mcmco.co.za

GEORGE

Jura Lands,
Beach Road,
Hansmoeskraal,
George, 6529

SALES
(+27) 44 878 2917

chris@mcmco.co.za

FREE STATE

Bloem Showgrounds,
Curie Avenue,
Generaal De Wet,
Bloemfontein, 9301

SALES
(+27) 84 022 7300

clarence@mcmco.co.za

GAUTENG

26 Sterling Rd, Unit 1,
Samrand Business Park,
Midrand, 0117

SALES
(+27) 12 030 3451

sales@mcmco.co.za