

**HZM**



# HZM 933 FRONT END LOADER





# SPECIFICATIONS

SPECIFICATIONS	Overall weight(kg)	8300
	L×W×H (mm)	6700x2200x3060
	Rated bucket capacity(m <sup>3</sup> )	<b>1.3-1.6</b>
	Rated load(kg)	2700
	Max. dump height (mm)	3500
	Bucket indicator	Yes
ENGINE	Model	<b>CUMMINS 6BT5.9-C130</b>
	Type	Vertical, In-line , Water cooling, six cylinder diesel engine
	Rated power	<b>97kW(130hp)</b>
	Rated speed(r/min)	2400
TRANSMISSION	Model of torque converter	YJ280
	Gearbox type	Fixed-spindle power shift
	Gear shift	2 gears ahead,2 gear astern
HYDRAULICS	Working pressure	16Mpa
	Boom lifting time	4.8s
	Fuel tank capacity	80L
STEERING	Type	hydraulic steering
	Min turning radius(mm)	4500
TYRES	Standard tires	17.5-25





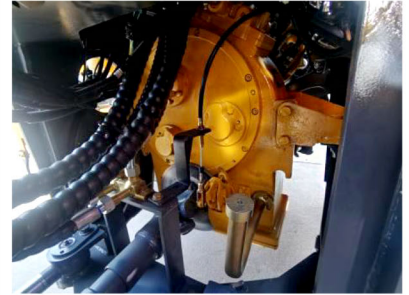
## KEY FEATURES



**CUMMINS ENGINE**



**HYDR. TORQUE CONVERTER**



**6-SPEED TRANSMISSION**



**UPGRADED MAIN VALVE**



**UPGRADED PUMPS**



**UPGRADED SOLENOIDS**



**NEW CABING SUSPENSION**



**DUAL COOLING SYSTEM**



**220V WATER PRE-HEATER**



**CABIN A/C VENTILATION**



**AIR BRAKE BOOSTERS**



**VARTA BATTERIES**





## KEY FEATURES



**NEW CAB DESIGN**



**NEW ENGINE CAB DESIGN**



**NEW COUNTERWEIGHT**



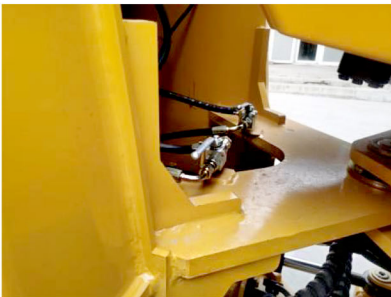
**REAR WIPER BLADE**



**MULTI-FUNCTION JOYSTICK**



**1.3-1.6CBM GP BUCKET**



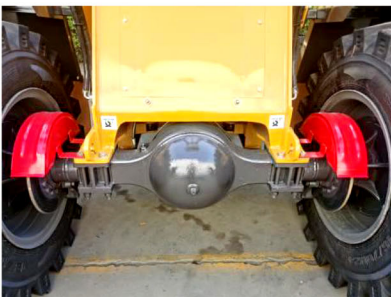
**FLOATING FUNCTION CONTROL**



**17.5-25 AG TYRES**



**OPERATOR LADDER**



**NEW AXLES**



**HYDR. TEST PORTS**



**REAR VIEW CAMERA**